

Newfield Central School District District Wide Safety Plan



*This plan has been developed in compliance with Education Law Section 2801-a and
Commissioner's Regulation Section 155.17*

Adopted by the BOE on August 22, 2013
Adopted by the BOE on September 4, 2014
Adopted by the BOE on May 2016
Adopted by the BOE on May 18, 2017

Reviewed May 2018

NEWFIELD CENTRAL SCHOOL DISTRICT SAFETY PLAN

The purpose of having safety plans is to prevent emergencies or, in the event of an emergency, minimize the impact on students and staff. The District Safety Plan is adopted by the Board of Education after a public hearing in order to give the community an opportunity to provide input.

Each school in the District has their own safety plan which is not subject to disclosure under the Freedom of Information Law or any other law. This summary of the safety plan(s) is provided as required by the New York State Education Department and Commissioner's Regulations.

The District Safety Team and Building Safety Teams meet annually, at a minimum, to review the specifics of each plan. Each plan addresses all of the major safety concerns that could arise or have been experienced by schools, outlining procedures and important contact information. These plans are kept in confidential but readily accessible files for law enforcement and school officials to use in the event of an emergency. A copy is also filed with the Commissioner of Education within thirty (30) days after adoption or amendment.

District and building safety teams may include representatives from a variety of constituents, such as Board Members, administrators, teachers, CSEA members, students, parent organizations, etc. The District Safety plan addresses training, prevention, structural issues, and other logistical/coordination concerns. The Building Safety plans provide more specific information about roles and responsibilities in various types of emergencies.

Additional information may be found in the following documents:

- Homeland Security Presidential Directives - HSP0-5,HSPD-8
- Homeland Security Act of 2002,6 United States Code (USC) Section 101
- Education Law Section 2801-a
- Public Officers Law Article 6
- NY Code of Rules and Regulations (NYCRR) Section 155.17

INTRODUCTION

For the sake of brevity, the Newfield Central School District and all of its environs may be referred to as "NCS" in this document.

SECTION 1: GENERAL CONSIDERATIONS AND PLANNING GUIDELINES

Purpose

The Newfield Central School District supports the SAVE Legislation and has developed this Emergency Response Plan in order to prepare and train for potential crisis that may affect the District's staff and students. The Newfield Central School District-wide Emergency Response Plan was developed pursuant to Commissioner's Regulation 155.17.

Identification of Teams

The Newfield Central School District has appointed a District-wide Safety Team consisting of, but not limited to, representatives of the teachers, administrators, parent organizations; school safety personnel; and other school personnel. The members of the team and their positions or affiliations are as follows:

District Team

Dr. Cheryl Thomas, Superintendent
Vicky Volpicelli, Elementary Principal
Eric Hartz, MS Principal
Patrick Mahunik, HS Principal
Debra Eichholtz, Business Admin
Steve Yapple, Facilities/Security Mgr
Robin Wood, Cafeteria Supervisor
Charles Brockner, Transportation
Chris Laughlin, Elementary Nurse
Amy Schwoeble, Secondary Nurse
Jamie Innes, State Trooper
Cheryl Jackson, Director of Spec. Prog.
Jennifer Luu, District Clerk

Elementary Building Team

Vicky Volpicelli, ES Principal
Peter Ahart, Assistant Principal
Cheryl Jackson, Dir Special Programs
Chris Laughlin, School Nurse
Tracy Wall, Teacher
Tony Cirulli, Custodian Pam
Scott, Secretary
Becky Charsky, ES Guidance

Secondary Building Team

Eric Hartz, MS Principal
Patrick Mahunik, HS Principal
Thomas Perry, NYS Trooper
Colleen Markle, MS Guidance
Rick Pawlewicz, Guidance
Jeff Augustine, HS Teacher
Amy Schwoeble, Nurse
Taylor Banford, Custodian

CONCEPT OF OPERATIONS

The District-wide Plan Protocols guide the development and implementation of individual building-level Emergency Response Plans.

In the event of an emergency or violent incident, the initial response to all emergencies at an individual school will be by the School Emergency Response Team. Upon the activation of the School Emergency Response Team, the superintendent will be notified by the designated Liaison Officer on the building team. Local emergency officials will also be notified by the Liaison Officer when appropriate.

PLAN REVIEW AND PUBLIC COMMENT

Pursuant to Commissioner's Regulation, Section 155.17(e)(3), this Plan will be made available for public comment at least 30 days prior to its adoption. The district-wide plan may be adopted by the School Board only after at least one public hearing that provides for the participation of school personnel, parents, students and any other interested parties. The plan must be formally adopted by the Board of Education.

Full copies of the District-wide Emergency Response Plan and any amendments will be submitted to the New York State Education Department within 30 days of adoption.

This plan will be reviewed periodically during the year and will be maintained by the District-wide Safety Team. The required annual review will be completed on or before July 1 of each year after its adoption by the Board of Education. A copy of the plan will be available at the district office.

SECTION 2: RISK EDUCATION/PREVENTION AND INTERVENTION

PREVENTION/INTERVENTION STRATEGIES

- NCS Administrative staff is expected to maintain collaborative relationships with the New York State Police (272-4671), and the Tompkins County Sheriff's Department (272-2444).
- Police authorities are consulted when the safety of staff, students, or the facilities is in jeopardy.
- Students Against Destructive Decisions (SADD)
- Annual presentation of Code of Conduct to student body
- Choices/Citizenship program highlighting conflict resolution strategies for students
- Mediation services provided by school counselor
- Peer education program
- Home base Advisory program
- Posters--character related

NON-VIOLENT CONFLICT RESOLUTION TRAINING PROGRAMS

Numerous types of training are available from a variety of sources, the implementation by all departments and programs to minimize the potential for violence. A sampling of the available resources includes:

- Training programs available through the New York State Police;
- Student mediation programs available through Conflict Dispute Resolution Center
Programs such as "PBIS," Positive Behavior Intervention and Support
- Crisis Intervention Training

TRAINING, DRILLS, AND EXERCISES

All administrators and school safety team members must take the online course sponsored by FEMA on the Incident Command System for Schools (<https://emilms.fema.gov/IS100SCA/index.htm>). New team members are required to complete the course prior to serving on the team.

Each building runs fire drills, bus drills, lockdown drills, shelter-in place drills, reunification drills and evacuation drills as per state guidelines. Faculty meetings and faculty handbooks are used to instruct on protocol for each drill.

Table top drills are conducted with the safety teams (which include local and county emergency responders) each year. Actual drills are conducted for lockdown, shelter-in-place and evacuation drills that test the plan's components with staff and student participation. A de-brief session is held following the drills to discuss any issues or changes that need to be made.

IMPLEMENTATION OF SCHOOL SECURITY

Security cameras are installed throughout the district. All doors are secured during the school day and a video buzzer system is required to gain access to the buildings.

There is a single point of entry in each building and visitors are asked to report to the buildings office to sign in for a visitor pass. Teachers and administrators monitor student activity throughout the day.

VITAL EDUCATIONAL AGENCY INFORMATION

Newfield Central School District Office
247 Main Street, Newfield, NY 14867
Phone: 607-564-9955
Fax: 607-564-0055

KEY OFFICIALS:

Dr. Cheryl Thomas, Superintendent	564-9955 x4140
Debra Eichholtz, Business Administrator	564-9955 x4121
Patrick Mahunik, High School Principal	564-9955 x3130
Eric Hartz, Middle School Principal	564-9955 x2126
Vicky Volpicelli, Elementary Principal	564-9955 x1145
Peter Ahart, Elementary Assistant Principal	564-9955 x1110
Cheryl Jackson, Director of Special Programs	564-9955 x1221
Cathy Griggs, Director of Technology & PD	564-9955 x5124
Charles Brockner, Head Bus Driver	564-9955 x4141
Steve Yaple, Facilities and Security Manager	564-9955 x4129

SCHOOL	NUMBER OF STUDENTS	NUMBER OF STAFF	TRANS.NEEDS	KEY OFFICIALS	PHONE NUMBER
Elementary	411	88	10	Vicky Volpicelli	X 1145
Middle School	168	24	4	Eric Hartz	X 2126
High School	196	46	6	Patrick Mahunik	X 3130

Newfield students also may attend:

BOCES-Vocational
555 Warren Rd.
Phone: 257-1551

Northeast School
425 Winthrop Dr., Ithaca
Phone:274-2209

TST Community School
Albany St. Ithaca
Phone: 273-901

Dewitt Middle School
560 Warren Rd.
Phone: 257-3222

BOCES - Smith Building
Phone: 257-2530

Beverly J. Martin School
302 W. Buffalo St.
Phone: 274-2209

New Roots Charter School
116 N. Cayuga St., Ithaca, NY
Phone: 339-6994

Boynton Middle School
1601 N. Cayuga St
Phone: 274-2241

George Junior Republic UFSD
24 McDonald Rd., Freeville
Phone: 844-6200

South Hill School
520 Hudson St.
Phone: 273-1473

Montessori School of Ithaca
120 E. King Rd., Ithaca
Phone: 277-7335

GST BOCES
375 W Church St
Elmira, NY 14901
(607) 739-3581

North Spencer Christian Academy
721 Ithaca Rd., Spencer
Phone: 589-6366

Gardner Road Elementary
541 Gardner Road
Horseheads, NY 14845
(607) 739-6347

Twin Tiers Baptist
2431 NY Rte. 352, Elmira, NY
Phone: 739-3619

Immaculate Conception School
320 W. Buffalo St.
Phone: 273-2707

EARLY DETECTION OF POTENTIALLY VIOLENT BEHAVIORS

All faculty and staff monitor student behavior. Each building provides intervention strategies and these are outlined in building safety plans. The following risk factors are provided to staff both verbally and in writing on an annual basis during faculty meetings. The information will also be posted on the district website for parent/guardian, students, and board member information. The identification of family, community and environmental factors (see below) will occur during grade level team meetings in the elementary and middle schools and by the Child Study Team at the high school for students considered "at risk".

Risk Factors for Violence/Aggression in Individuals

- Overexposure to violence in the media
- History of delinquency before the age of 13
- Low family income
- Low non-verbal IQ
- Sibling convicted of a crime
- Consistent poor school performance by the age of 10
- Association with violent peers: gangs
- Lack of physical needs being met
- Early first use of a drug
- Frequent school transitions
- Early history of school discipline problems
- Poor parenting and family chaos
- Low levels of empathy

HAZARD IDENTIFICATION

The following sites of potential emergency must be considered for each facility owned and/or occupied by NCS and its personnel and programs. Each potential site must be considered in the Building Safety Plans:

1. Systems:
 - Electrical Panels/Shut off
 - Gas Lines/Shut Off
 - Gas Appliances
 - Heating System
 - Sewage System
 - Structural Failure
 - Ventilation/ Air
 - Conditioning Water
 - Supply/Shut Off
2. Environmental Problems
 - Chemical Storage
 - Cleaning Supplies
 - Paper Supply/Storage
 - Specialized Classrooms/Labs
3. Site Considerations
 - Isolated areas in proximity to the school
 - Nearby streams
 - Steep areas close to the school
 - Unprotected exterior gas, electric, air conditioning supplies and/or equipment
 - Playground equipment

SECTION 3: RESPONSE

RESPONSE PROTOCOLS

The district will use the Incident Command System for Schools. The Incident Commander and Staff have been designated for each building by the building safety teams. Assignment of duties for Central Office is as follows:

- I. Incident Commander:** This person manages the entire incident and will very often be an emergency responder rather than a school administrator. *Sets the incident objectives, strategies, and priorities; has overall responsibility for the incident response and coordinates/manages all ICS functions. Responsible for ensuring safety, providing information services to internal and external stakeholders (such as parents), and for establishing and maintaining liaison with other agencies participating in the incident.*
- Dr. Cheryl Thomas 607-564-9955 x 4140
 - Eric Hartz (alternate) 607-564-9955 x 2126
 - Vicky Volpicelli (alternate) 607-564-9955 x 1145
- A. Safety Officer(s):** This person is responsible for the safety of the scene and the individuals at the scene. His or her role might include determining whether students have been evacuated far enough from the school. Often this role will be filled by an emergency responder. *Monitors safety conditions and develops measure for assuring the safety of all response personnel.*
- Steve Yaple 607-564-9955 x 4129
 - William Ellers (alternate) Radio contact
 - Tony Cirulli Radio contact
- B. Liaison Officer(s):** This person is responsible for coordinating with all of the agencies that have responded to the crisis. It is critical that this person be a good communicator and able to convey important information both to responders about the situation or the school facility and to school staff about necessary actions. *Serves as primary contact for supporting agencies assisting at an incident.*
- Cheryl Jackson 607-564-9955 x 1026
 - Amy Schwoeble (alternate) 607-564-9955 x 3114
 - Jennifer Luu (alternate) 607-564-9955 x 4140
- C. Public Information Officer(s):** This person is responsible for releasing information to families, community members, and the media during a crisis. The media can be a tremendous help in getting information to families and community members. *Serves as the conduit for information to internal and external stakeholders, including the media or parents.*
- Jennifer Luu 607-564-9955 x 4140
 - Debra Eichholtz (alternate) 607-564-9955 x 4121
 - Peter Ahart (alternate) 607-564-9955 x 4122
- II. Operations Chief(s):** This person manages student and staff care during a crisis. This includes physical (food and water), medical (CPR and first aid), and mental needs (psychological services), as well as student release. *May check outdoor areas for students and staff, maintain student and staff emergency contacts and medical information/supplies, oversee emergency kits and supplies, keep cellular phones or two-way radios to ensure constant communication, student release/parent reunification, and assist students and staff with special needs.*
- Cathy Griggs 607-564-9955 x 5124
 - Debra Eichholtz (alternate) 607-564-9955 x 4121
 - Patrick Mahunik (alternate) 607-564-9955 x 3130

III. Planning/Documentation Chief: This person is responsible for documenting the event, analyzing what has transpired thus far, and planning for possible further action. *Plans and conducts exercises, completes after-incident debriefings and reports, documents all incidents (both practice and real).*

- Pam Scott 607-564-9955 x 1145
- Roxanne King (alternate) 607-564-9955 x 4115
- Tracy Condie (alternate) 607-564-9955 x 4115

IV. Logistics Chief: This person manages the supply and staffing needs of the situation. The logistics officer focuses on acquiring the supplies needed to assist the emergency responders. The logistics officer's school staff logistics responsibilities will include long-term needs (beyond the first four hours) for things like food, water, and bathroom facilities, as well as transportation (if students need to be bused off campus). The logistics officer is also responsible for locating and assigning staff to fill various tasks for emergency situations. This could include finding staff to carry messages from the operations officer to those staff members directly managing students. *Secures and coordinates resources needed by students, staff, and first responders during an incident, including food, shelter, buses, generators, and other supplies as needed*

- Robin Wood 607-564-9955 x 4024
- Steve Yapple (alternate) 607-564-9955 x 4129
- Debra Eichholtz (alternate) 607-564-9955 x 4121

Notification and Activation

The primary responsibility for contacting law enforcement regarding threats or acts of violence rests with the administrative staff. Students should contact law enforcement only when it is not possible for a NCS staff member to do so. A NCS staff member should contact law enforcement only when it is not possible or practical for his/her supervisor to do so. In the event that a student or NCS staff member contacts law enforcement, he/she should notify his/her immediate supervisor.

Administrators will be alerted to incidents through flagged emails, the voice mail 911 system and/or 2-way radio.

Families will be notified of incidents through the emergency notification system, letters home, the district website and/or the LED sign in front of the school as applicable and practical.

Staff members will be notified through the communication systems set up by individual building plans.

The primary responsibility for obtaining assistance from emergency services and local government agencies during an emergency rests with the Administrative staff. A Student should speak with a teacher and a staff member should speak with his/her immediate supervisor about obtaining assistance unless such emergency is so dire as not to allow the time to do so.

DISTRICT RESOURCES AVAILABLE FOR USE IN AN EMERGENCY

During an emergency the following should be considered/consulted:

1. The District-Wide School Safety Plan (this document);
2. The School Building Safety Plan(s) for affected building(s)

The contact for extreme emergencies is 911. Other numbers for urgent, but not emergency situations are:

Bangs Ambulance Service	273-1161
NY State Police	272-4671
Tompkins County Sheriff's Department	272-2444
Newfield Substation	564-0778
NY State Electric and Gas	1-800-572-1111
Tompkins County Environmental Health Dept.	274-6888
Tompkins County Highway Department	274-0300
Town of Newfield Highway Department	564-3616
Newfield Fire Company	564-7222 (voice mail only)

NYS Dept. of Transportation (Cortland)	756-7072
American Red Cross	273-1900
Poison Control Center	1-800-222-1222
If first line is busy	1-315-476-4766
Cayuga Medical Center (Hospital)	277-1600
Cayuga Medical Center (Convenient Care)	274-4150
Tompkins County Fire, Disaster, and EMS Office (John L. Miller, NYS Emergency Management Office)	257-3888

Other community agencies that are potentially of assistance during an emergency include:

- Department of Social Services	274-5252
- Family and Children's Services	273-7494
- Suicide Prevention and Crisis Service	272-1616

TECHNOLOGY USE

1. Public Address System: The PA system can be used for both building-wide and district-wide notification of an emergency.
2. Navigate Prepared (a phone app) is used by staff to notify of an emergency and provide updates throughout an incident.
3. Access Control System: The elementary school has six (6) exterior doors which can be opened by proximity card access. The middle school has two (2) exterior doors and the high school has three (3) exterior doors which can be opened by proximity card access. All doors are locked except the one point of access at each building. Emergency lock-down buttons are located in each main office and the district office. When pressed, these buttons will lock down all doors in all three school buildings. All doors are locked during the school day and at specified times each evening and on weekends and holidays.
4. Intrusion System: Motion detectors are located throughout the district and all exterior doors are monitored when the intrusion system is armed.
5. Video Surveillance System: Cameras are located inside the buildings and at several exterior locations.
6. Emergency Notification System: The District contracts with School Messenger to provide the ability to use email and automatic phone calls to notify families, staff, and community of any emergency.
7. Emergency announcements will also be posted on the LED sign in front of the school if possible.
8. Remote Access System: All cameras and data are accessible via remote access to authorized personnel.

PARENT NOTIFICATION

1. In the event of an early dismissal, the Superintendent or his/her designee will notify each school building. It will be the responsibility of each building to notify parents of the early dismissal.
2. In the event of a violent incident, the Superintendent or his/her designee will notify each building. Notification of parents will be at the discretion of the Superintendent/designee and may be accomplished by use of the emergency notification system or by follow-up letter to parents of children affected or potentially affected by the violent incident.

SITUATIONAL RESPONSE: MULTI-HAZARD RESPONSE

Emergency Closing Procedures:

Schools occasionally must close down operations because of severe weather or unanticipated emergencies. The decision to cancel NCS classes is made by the District Superintendent or his/her designee. When NCS classes are canceled because of emergency conditions, the following will occur:

- a. The Superintendent of Schools or his/her designee is authorized to make or approve a school closing decision.
- b. The Superintendent or his/her designee will notify as many as possible of the following radio stations and television channels:

WICB-FM	91.7 FM	WQNY	103.7 FM
WVBR	93.5 FM	WAAL	99.1 FM
WPCX		WINK	106 FM
WHCU-AM	870 AM		
WYXL	97.3 FM		
WTKO	1470 AM		
WSKG	89.3 FM		
WENY Elmira	Channel 9		
WIXT, Syracuse	Channel 3		
WTVH, Syracuse	Channel 5		
WBNG, Binghamton	Channel 12		

- c. The Superintendent or his/her designee will initiate notification through the emergency notification systems.

Early Dismissal

In the face of an emergency situation occurring during the school day, the following procedures are to be followed:

1. The Superintendent or his/her designee makes or approves a "go home" decision.
2. Individual building principals should discuss concerns with the Superintendent who will make the ultimate decision.
3. Transportation must be arranged for return home. This may be done in one or more ways:
 - School District buses
 - Private vehicles
 - Walking
 - Alternate transportation as determined by Superintendent
4. Wherever necessary and advisable, an announcement is made on the radio stations and television channels identified in the section above.
5. The Superintendent or his/her designee will initiate notification through the emergency notification systems.
6. NCS personnel remain and the switchboard should remain open until all students have safely been returned to their homes.
7. Updated information will be posted on the school website whenever possible.

Evacuation/Alternate Shelter Plan

In the case of an incident that necessitates evacuation of all students in a particular building or district-wide, the following plan will be activated:

1. Evacuation of an area within the building to another area within the building or outside of the building.
 - a. The Administrator will provide instructions to direct students/staff from the affected area to a safe area within the building or outside of the building. The fire alarm may be used to signal the need for an evacuation.
 - b. The students and staff will be escorted by the teachers involved quickly and quietly to the safe area. A teacher or staff member will follow the group to ensure everyone leaves the area.
 - c. No stops by students are allowed. All books, etc. are to be left in the room.
 - d. Once in the safe site, attendance will be taken and students/staff will remain awaiting further instructions from the Administrator.
 - e. Parents will be notified via the emergency notification systems and/or the district website.
2. Evacuation of the entire building to another safe building on campus.
 - a. The Administrator will provide instructions to direct students/staff from the building to safest/quickest exit of the building.
 - b. The student will be escorted out of the building and taken to a safe site. A teacher and/or staff member will follow the group to ensure that everyone has been evacuated.
 - c. The students/staff will be directed on the safest travel route to the other building and this route should be strictly adhered to.
 - d. No stops by student are allowed. All books, etc. are to be left in the room
 - e. Once in the safe site, each teacher will take attendance. Students and staff will remain awaiting further instructions from the Administrator.
 - f. Parents will be kept up to date via the emergency alert systems and/or via the district website.
3. Evacuation of a building/campus to an off-campus site.
 - a. The administrator will communicate with the Transportation Supervisor regarding the immediate bus needs, including how many buses, location for loading off-campus site locations
 - b. The Transportation Supervisor will immediately call in all "on campus" drivers; and if needed, those drivers at home who are closest.
 - c. The administrator will provide instructions to direct students/staff from the building to the safest and quickest exit of the building.
 - d. No stops by student are allowed. All belongings are to be left in the room(s).
 - e. The student and staff will be escorted by the teacher(s) quickly and quietly to the safest exit out of the building. A teacher/staff member will follow the group to ensure everyone leaves the building.
 - f. Once out of the building, students, teachers and staff will be directed onto the buses. Teachers and staff members will ride the buses with the students. Teachers will direct students to remain quiet.
 - g. Upon arrival at the off-campus site, a listing of all students, teachers and staff members will be compiled.
 - h. Bus drivers will remain at the off-campus site until given further direction by the incident commander.
 - i. Parents will be notified of the reunification site via the emergency notification systems and/or the district website.

Potential Evacuation/Reunification Sites

Contact Information

1. People's Baptist Church	Pastor James Depue	564-7716
2. Newfield Town Hall	Jeffrey Hart	564-0654
3. Newfield Methodist Church	Michael Kelly	564-7823
4. Newfield Town Barn	Kevin Berggren	564-3616
5. Newfield Fire Company	Steve Yaple	351-3616
6. Masonic Temple	Steve Yaple	351-3616
7. Ithaca City School buildings	Luvette Brown	274-2101
8. Spencer School buildings	Joseph Morgan	589-7100
9. Football Field	Steve Yaple	564-9955 x 4129
10. Elementary School Upper Gym	Vicky Volpicelli	564-9955 x 1145

Bus Drivers On-Site:

Anne Marshall
Chuck Brockner
Tony Ebel
Dan Emery
Amanda Berggren

IMPLIED/DIRECT THREATS

Any threat to the safety and wellbeing of students and/or staff will be treated seriously. Threats involving bodily injury will be considered in the context of the *Code of Conduct* adopted and approved for use by the staff of the NCS.

BOMB THREATS necessitate the following actions:

1. Notify local police agency of the threat or presence of a device.
2. If the threat is considered to be "real", students and staff will be evacuated.
3. The Incident Commander/Safety Officer will allow the building to be re-occupied by staff and students after it has been cleared by appropriate agencies and the ICS Safety Officer.
4. Parents will be notified in one or more of the following ways: letter home, emergency notification system, district website.

ACTS OF VIOLENCE

Any act of violence is to be considered in the context of the *Code of Conduct*. Please refer to the *Code of Conduct* for additional information about the consequences of violent behavior. If the act of violence is so egregious as to require action(s) beyond that/those found in the *Code of Conduct*, then the following responses should occur:

1. A staff member should report the incident to his/her immediate supervisor.
2. An Administrator should report the threat to the District Superintendent or his/her designee, who will decide whether or not to involve the local authorities and/or emergency personnel. Possible contacts include but are not limited to the following:

9-1-1	911
New York State Police	272-4671
Tompkins County Sheriff	272-2444
Bangs Ambulance	273-1161
Newfield Fire Company	564-7222 (voice mail only)
Tompkins County Fire, Disaster and EMS Office	257-3888

4. Other actions may be taken at the direction of the Incident Commander.

HOSTAGE TAKING

- *Identification of decision makers*

The Incident Command System (ICS) will be used to identify decision makers. School personnel will remain in command until law enforcement arrives at the scene.
- *Plans to safeguard students and staff*

Each building has a specific procedure to follow, which will remain confidential. It may be necessary to lock down the building or evacuate the building, depending on the location of the threat. A reunification site away from the school will be set up to return students to their parents/guardians.
- *Procedure to provide transportation*

The Operations Chief will contact the transportation supervisor as directed by the Incident Commander in order to evacuate and/or shelter students and staff during the emergency.
- *Procedures to notify parents*

Parents will be notified via the district website and/or the emergency notification systems. The superintendent will send a letter home following any major emergency situation to further inform the parents/guardians of the situation, response and follow-up as appropriate.
- *Procedures to notify media*

The superintendent or his/her designee will also arrange any press conference and compose any press releases.
- *Debriefing procedures*

The superintendent or his/her designee will hold a debriefing meeting with all district and building level administrators following the incident. Building level administrators will debrief their safety teams and faculty as appropriate.

INTRUSIONS

- *Identification of decision makers*

The Incident Command System (ICS) will be used to identify decision makers. School personnel will remain in command until law enforcement arrives at the scene.
- *Plans to safeguard students and staff*

Each building has a specific procedure to follow, which will remain confidential. It may be necessary to lock down the building or evacuate the building, depending on the location of the threat. Students will be evacuated if the incident commander and safety officer deem it necessary and safe.
- *Procedure to provide transportation*

The Operations Chief will contact the transportation supervisor as directed by the Incident Commander in order to evacuate and/or shelter students and staff during the emergency.
- *Procedures to notify parents*

Parents will be notified via the district website and/or the emergency alert systems. The superintendent will send a letter home following any major emergency situation to further inform the parents/guardians of the situation, response and follow-up as appropriate.
- *Procedures to notify media*

The superintendent or his/her designee will also arrange any press conference and compose any press releases.
- *Debriefing procedures*

The superintendent or his/her designee will hold a debriefing meeting with all district and building level administrators following the incident. Building level administrators will debrief their safety teams and faculty as appropriate.

KIDNAPPINGS

- *Identification of decision makers*
The Incident Command System (ICS) will be used to identify decision makers (see page 8). School personnel will remain in command until law enforcement arrives at the scene.
- *Plans to safeguard students and staff*
Each building has a specific procedure to follow, which will remain confidential. It may be necessary to lock down the building while a search is underway.
- *Procedure to provide transportation*
The Operations Chief will contact the transportation supervisor to provide any information available so bus drivers can be on the lookout for the vehicle/persons involved.
- *Procedures to notify parents*
Parents will be notified via the district website and/or the emergency notification systems. The superintendent will send a letter home following any major emergency situation to further inform the parents/guardians of the situation, response and follow-up as appropriate
- *Procedures to notify media*
The superintendent or his/her designee will also arrange any press conference and compose any press releases.
- *Debriefing procedures*
The superintendent or his/her designee will hold a debriefing meeting with all district and building level administrators following the incident. Building level administrators will debrief their safety teams and faculty as appropriate.

ARRANGEMENTS FOR OBTAINING EMERGENCY ASSISTANCE FROM LOCAL GOVERNMENT

Central Office maintains ongoing communication with the Tompkins County Health Department and the Red Cross, as well as local and state politicians. These include:

- Tompkins County Health Department 274-6600 or 1-800-875-6686
- Tompkins County Red Cross Executive Director 273-1900 x 10
- Health & Safety Director 273-1900 x 16
- Senator Tom O'Mara 732-2765
- Assemblywoman Barbara Lifton 277-8030

DISTRICT RESOURCES AVAILABLE FOR USE IN AN EMERGENCY

The district has buses available for emergency transport if necessary. School buildings may be used as sheltering sites or reunification centers.

COORDINATING THE USE OF SCHOOL DISTRICT RESOURCES AND MANPOWER DURING EMERGENCIES

In the event of an emergency or disaster, the Superintendent or designee should immediately notify the following:

- Call 911 to activate the emergency law enforcement, fire, and medical response systems
- Call the Superintendent (Incident Commander).
 - The Incident Commander will notify members of the Administrative Team and applicable emergency services of the situation.
 - The Incident Commander will establish a Command Post.
 - The Facilities and Security Manager (or Maintenance Worker, if the Manager is not available) will contact all Maintenance Staff via radio, to report to an assigned location, and/or to remain on standby.

SECTION 4: RECOVERY

REUNIFICATION

A plan for reunifying parents/guardians with students is practiced each year. The reunification site will be communicated to parents/guardians using the School Messenger system after students have been safely transported to this location. Parents will be asked to sign in and show photo ID. They will be taken to a room where they will be reunited with their child/ren and asked to exit. The students will be kept in a separate, secure location away from the arriving parents until their parent is identified and walked to meet them by school personnel.

DISTRICT SUPPORT FOR BUILDINGS

Mental health workers (guidance counselors, social workers, school psychologists) will work in the building affected in order to provide support to faculty, staff and students as necessary.

Principal(s) are expected to consult with the Superintendent in composing letters to parents following any emergency. The District Liaison Officer will communicate with outside agencies, such as the Tompkins County Health Department, in order to provide necessary services following any emergency.

The District Liaison Officer will communicate with outside agencies, such as the Tompkins County Health Department, in order to provide necessary mental health services following any emergency

SECTION 5: SUMMARY OF BUILDING PLANS

PLANNING AND PURPOSE

Each School Building Principal, under the direction of the Board of Education and Superintendent of Schools, has appointed a Building-Level School Safety Team charged with the development, implementation and maintenance of the Building-Level Emergency Response Plan. This Emergency Response Plan has been developed due to the realization of the need and importance of an effective response to emergency situations and to comply with the Commissioner of Education Regulation 155.17.

The Building Crisis Plans are one component of the District-Wide Comprehensive School Safety Plan. The Building-Level Safety Team will work closely with the District-Wide Safety Team to ensure that all practices and procedures remain current and are effective. The Building Crisis Plan seeks to respond to the types of natural or technological hazards that may occur through the maximum utilization of the school district's personnel and resources.

The intent of the Building Crisis Plan is to develop consistent responses to emergency situations experienced by the school district and to integrate the district's emergency response with other emergency responses. The school building's planning process is critical to a workable emergency response and has been developed to include the following:

- Building Level School Safety Team
- Emergency Response Team
- Post-Incident Response Team
- Volunteer Search Team
- Incident Command System
- Early Dismissal, Evacuation and Sheltering Plans including Annual Building Test of Emergency Response Procedures
- Emergency Notification to Parents
- Emergency Telephone #'s (internal and external)
- School Building Information Report, Floor Plans & Resources
- School Building Command Post(s)
- Emergency Procedures Notice and Training for Students and Staff
- Annual Emergency Response Plan Review
- Needs of Handicapped Students and Staff
- Coordination with Local and County Emergency Response Agencies
- Pre-Emergency Planning and Sequential Emergency Response
- Hazard Analysis
- Communication Systems
- Public Information Officer and Alternate
- Transportation
- Emergency Response Kit

EMERGENCY PLANNING RATIONALE

The New York State Education Department Commissioner of Education Regulation Section 155.17 requires that each Building Level School Safety Team develop an Emergency Response Plan and update it by July 1 of each school year so it can be incorporated into the District-Wide Comprehensive Safety Plan. This will ensure the safety and health of students and staff and also ensure integration and coordination with similar emergency planning at the Municipal, County and State levels. Each School Principal will designate a Building Level School Safety Team to oversee the development, implementation, updating and testing of the Emergency Plan. The School Principal will coordinate with both internal staff and representatives from external agencies to meet required elements of the law. The initial response to all emergencies at the School Building-Level will be by the School Emergency Response Team. Once the School Principal activates the School Emergency Response Team the Superintendent of Schools will be notified and, if necessary, local emergency officials will also be notified. Protocols will be established to obtain assistance from County and State agencies if necessary.

PLAN REVIEW AND PUBLIC COMMENT

- The Building Crisis Plans will be reviewed periodically throughout the school year and maintained by the Building-Level School Safety Teams.
- A summary of the Building Crisis Plans will be made available for public comment at least 30 days prior to its adoption as required by the Commissioner's Regulation 155.17(e)(3). The Building Crisis Plans will become part of the District-Wide Comprehensive Safety Plan which will be formally adopted by the Board of Education.
- The Building Crisis Plans shall be confidential and not subject to disclosure to the general public.
- Full copies of the Building Crisis Plans will be supplied to both Local and State Police within 30 days of adoption.

PLAN OF ACTION

In an emergency, time is a critical factor in the decision making process. Decision makers need to know if the Plans have current and accurate information (names, phone numbers, student information, building resources, etc.). Basic components include:

- Integration of police, fire, emergency medical services, hospitals, gas and electric utilities and transportation
- Delineation of the roles and responsibilities of personnel at the emergency sites (Chain-of-Command)
- Notification of who should be contacted in an emergency and in what order

To account for the variable character of disaster emergencies and the extent of advance warning, there are three different plans of action to protect the health and safety of students and staff. The three plans are as follows:

Go-Home Plan (Early Dismissal)

The *Go-Home Plan* meets the need to return students to their homes and family as rapidly as possible. Typically, this type of response is used when snow arrives after students are in school. Each school maintains current student records which include names and telephone numbers of family and designated surrogates for the purpose of notifying families when this type of situation occurs. Students with special needs have been identified and planned for appropriately. The emergency notification system will be activated in order to notify parents that students will be dismissed early.

Shelter Plan

Shelter-In-Place is a decision made when the situation is safer inside than outside. For example, during conditions when the roads are closed for outside travel, or when they are extremely hazardous, sheltering is called for. Generally, sheltering is for a short time - but conditions could warrant extended sheltering. Sheltering Plans include provisions for at least 24 hours. Schools have identified the safest area(s) for occupants in their Building Crisis Plans. These areas are reviewed during the school district's Annual Visual Inspection required under the New York State RESCUE regulations.

Stay in Place

The stay in place is used when there is a situation in the building that requires no action on the part of students or teachers. For example, a student has vomited in the hallway and it needs to be cleaned up before students can pass to their next class. Or, a teacher has fainted and the halls need to be clear for emergency personnel to access, treat, and transport.

Lockdown is a special kind of sheltering plan that requires individuals to remain within the safety of their immediate area to protect them from imminent danger. An intruder may be one reason to invoke this type of response.

Lockout usually means the threat is exterior to the building. All exterior doors are secured and no one may enter or leave the building. A posting is placed at the front entrance of the building indicating a lockout is occurring and giving direction on where arriving individuals should go. Usually, normal activities can continue in the building.

Evacuation

Evacuation to a safe place requires that a building's inhabitants get out and go somewhere else. Evacuation may mean only going outside, away from the building and waiting for the danger to pass. In some circumstances, however, the nature of the emergency may demand that students are transported and housed temporarily in some other building. Building Crisis Plans include provisions for transportation and use of alternate sites.

IDENTIFICATION OF SCHOOL TEAMS:

1. Building-Level School Safety Team

The Building-Level School Safety Team is selected by the Principal and includes teachers, administrator, and parent organizations, safety and other school personnel, community members, local law enforcement officials, local ambulance and other emergency response agencies, and any other representatives deemed appropriate. Some major functions of the team include:

- Develop and update the Building-Level Safety Plan to reflect practices consistent with the District- Wide Safety Plan and Code of Conduct.
- Develop, implement and evaluate Building-Level exercises and drills.
- Conduct periodic safety audits and climate surveys.
- Review VADIR data.
- Recommend appropriate training for all building occupants.

2. Building-Level School Emergency Response Team

The Building-Level School Emergency Response Team is selected by the Principal and Building-Level School Safety Team and may be comprised of members of the Building-Level School Safety Team. At a minimum, the Team will include the Building Principal, Assistant Principal (if any), School Nurse, Head Custodian, and others as necessary. This team will take charge in a Building-Level emergency and work under the direction of the Building's Incident Commander.

3. Building-Level Post-Incident Response Team

The Building-Level Post-Incident Response Team provides post-incident psychological and medical aftercare if necessary. A district-wide Post-Incident Response Team that includes members of the Tompkins County Department of Mental Health is also available to assist in post-incident response.

4. Building-Level Volunteer Search Team

Although not specifically required by the SAVE legislation, each school building may establish a Volunteer Search Team. This Team will assist local emergency responders in searching a building. The involvement of building personnel is important since they are more familiar with the building and more likely to spot something unusual or out of place. Volunteers receive training prior to conducting a building search and are never asked to touch or handle questionable items.

BUILDING SAFETY TRAINING

Training for Building Emergency Response Teams may include, but is not limited to the following:

- De-escalation techniques
- Tabletop exercises
- Multi hazard training/drills
- Basic concepts of the Incident Command System (ICS) for schools.

The Building-Level School Safety Team includes members of local emergency response services who will be instrumental in assisting the Team in annual review of the Plan and conducting drills and exercises to test the Plan. These tests may include tabletop exercises which will be coordinated with Local and County emergency responders and preparedness officials. The School Building Emergency Response Team will be critical in the coordination of these exercises.

The District-Wide Comprehensive School Safety Plan requires annual multi-hazard training for students and staff. The intent of this training is to make building residents aware of the specific response procedures in their buildings.

All school building staff will be familiarized with the basic concepts of the Incident Management System (Incident Command). This type of training can be most successfully accomplished by members of the Building-Level School Safety Team who would be most familiar with the procedures they have established. The Team will utilize a train-the-trainer approach to train individual classroom teachers to relate this information to their class. Staff training will be incorporated into regular staff meetings.

IDENTIFICATION OF SITES OF POTENTIAL EMERGENCIES

Each Building-Level School Safety Team has identified sites of potential emergencies including both internal and external hazards that may warrant protective actions such as the evacuation and sheltering of the school population.

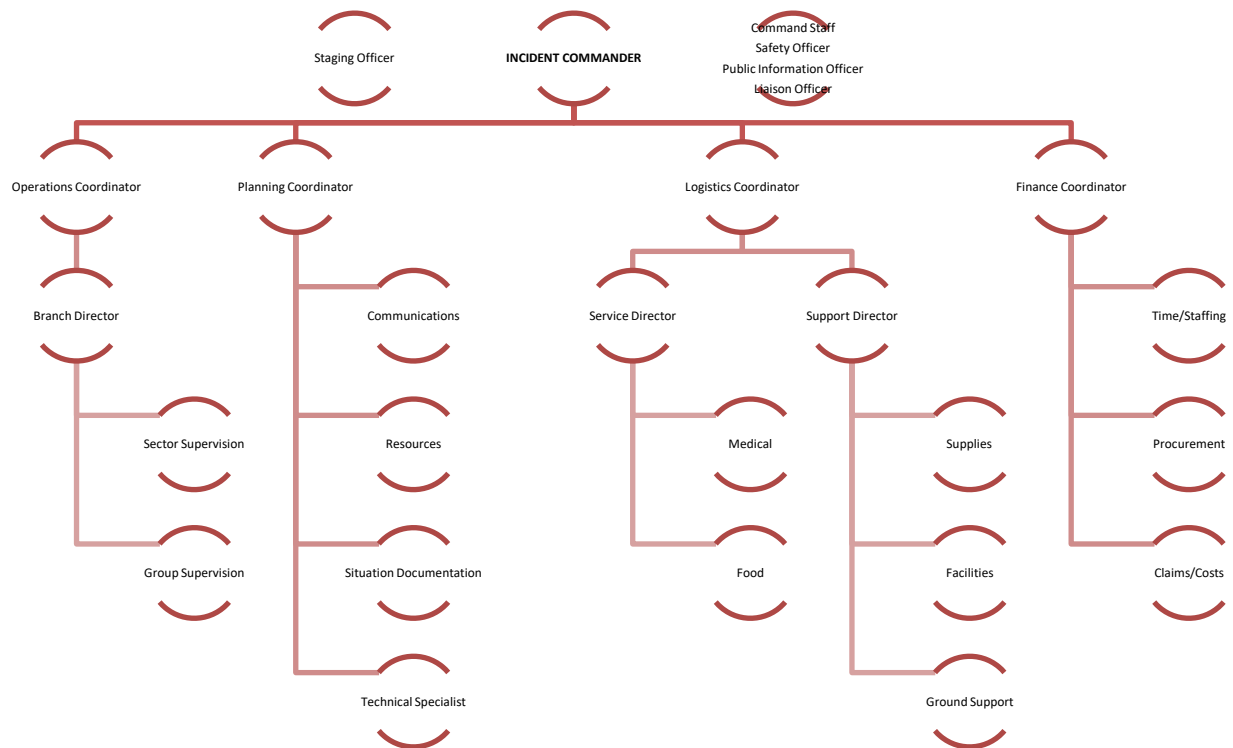
INCIDENT COMMAND SYSTEM

The school district has adopted an Incident Command System (ICS) which consists of procedures for controlling personnel, facilities, equipment and communication during an emergency. The ICS will be implemented at the beginning of an incident and will end when management and operations are no longer required. This system is structured to expand with the needs of an escalating incident and fulfill the command and control requirements of each incident. ICS is designed to enable personnel to respond to any type of incident and improve student and staff safety by providing better accountability of personnel and use of available resources.

It is the responsibility of the Incident Commander (IC) to implement the necessary functions within this system based on the demands of the incident. The IC is not always the building principal and may be dependent on the type of incident. As the needs of the incident increase, the IC will further expand the system as necessary. The IC will be responsible for the following:

- Assessing the situation and available resources
- Determining an appropriate action plan
- Monitoring the plan's effectiveness
- Continually modifying the plan to meet the needs of the situation

The five main functions of the school district ICS are Command, Operations, Planning, Logistics and Finance. The command structure is as follows:



TRAINING FOR INCIDENT COMMAND SYSTEM

Members of the School Safety Teams are required to complete the Introduction to the Incident Command System for Schools which can be accessed on-line: (<https://emilms.fema.gov/IS100SCA/index.htm>)

ASSIGNMENT OF RESPONSIBILITIES

The school building will utilize the Incident Management System (Incident Command) as described above as its routine means of response to emergency situations. In most instances command will be transferred to emergency response personnel upon their arrival. The School District Incident Commander transferring command to emergency response personnel will readily assume a subordinate role in support of the new IC and as dictated by emergency response personnel. Each building has established a chain of command.

SECURITY OF CRIME SCENE

Securing and restricting the crime scene is of prime importance in order to preserve evidence from being disturbed or destroyed in cases of violent crimes on school property. As such, the following procedures will be practiced:

- The IC will be responsible for crime scene security until relieved by law enforcement officials.
- No items will be moved, cleaned, or altered without prior approval from appropriate law enforcement officials.
- While security of the crime scene is important, it will in no way interfere with the rescue and aid of injured persons.